



WARSAW UNIVERSITY OF LIFE SCIENCES – SGGW

INSTITUTE OF ECONOMICS AND FINANCES

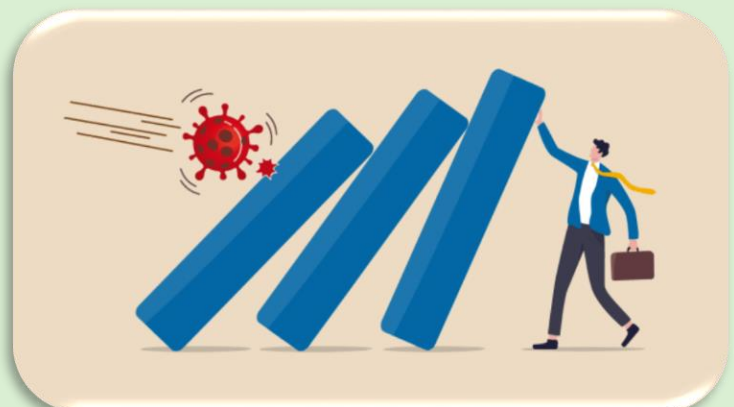
DEPARTMENT OF LOGISTICS

ARE PLEASED TO INVITE YOU TO THE INTERNATIONAL CONFERENCE:

# ECONOMIC AND SOCIAL CONSEQUENCES OF THE COVID-19 PANDEMIC

Warsaw, June 10, 2021

ON-LINE EVENT



**Dear Colleagues,**

The COVID-19 pandemic has caused numerous changes in people's life. Its impact is global, as it does not focus only on a given area nor apply only to individual spheres. The effects of the COVID-19 pandemic are undoubtedly unheard of for people nowadays. This difficult period has brought many changes—some of them were introduced temporarily only during the pandemic and some of them will be permanent and will stay with us forever. It is impossible to cover all aspects and effects of the COVID-19 pandemic. From the point of view of states and citizens, the most visible are economic and social effects. Many industries, sectors, and areas have been affected by economic problems. To avoid or reduce this impact some of them have had to change their strategy and tactics. Adaptation processes and innovations were introduced, with acceleration as a result of the pandemic. Aside from the economic effects, the social effects are also very important—people's social lives have been drastically reduced. In addition, very often economic and social aspects were deeply interconnected. There is a need to collect and systematize knowledge about the economic and social consequences of the COVID-19 pandemic.

Kind regards,

**Tomasz Rokicki, Prof. SGGW, dr. hab.**

**Chairman of Organising  
Committee**

**Bogdan Klepacki, Prof. dr. hab.**

**Chairman of Scientific  
Board**

**The thematic scope of the conference concerns the effects of the Covid-19 pandemic on:**

- functioning of countries
- activities of state groupings
- functioning of public and private enterprises
- e-commerce markets
- courier services markets
- operation of retail enterprises
- logistics, including storage and transport of goods
- supply chains
- trade and services
- construction sector
- functioning of passenger transport, including urban transport
- the energy sector
- functioning of the tourism and catering industry
- banking sector
- sustainability of farms
- functioning of the labor market, including remote work
- public finance sector
- the functioning of society in the COVID-19 pandemic
- functioning of social groups
- sustainability of professional groups
- functioning of education and remote education
- sustainability in the activities of universities
- differences in the lives of urban and rural residents

**Papers and presentations for the conference are accepted**

**in English or Polish languages.**

## **Scientific Board**

Bogdan Klepacki, Prof. dr. hab., dr. h.c. – WULS – SGGW, Poland – Chairman  
Tomasz Rokicki, Prof. SGGW, dr. hab. – WULS – SGGW, Poland – Vice Chairman  
Piotr Bórawski, Prof. UW-M, dr. hab. – University of Warmia and Mazury in Olsztyn, Poland  
Halina Brdulak, Prof. SGH, dr. hab. - SGH Warsaw School of Economics, Poland  
Mirosław Chaberek, Prof. dr. hab. - University of Gdańsk, Poland  
Heorhiy Cherevko, Professor – Lviv National Agrarian University, Ukraine  
Piotr Gradziuk, Prof. IRWiR PAN, dr. hab. – Institute of Rural and Agricultural Development of the Polish Academy of Sciences, Poland  
Elena Horska, Professor. - Slovak University of Agriculture in Nitra, Slovakia  
Marianna Jacyna, Prof. dr. hab. – Warsaw University of Technology, Poland  
Mariusz Jedliński, Prof. AMS, dr. hab. - Maritime University of Szczecin, Poland  
Arkadiusz Kawa, Dr. hab. - Łukasiewicz - Institute of Logistics and Warehousing, Poland  
Yuriy P. Kondratenko, Professor - Petro Mohyla Black Sea National University, Ukraine  
Vassilis Kostoglou, Professor - The International Hellenic University, Greece  
Mariusz Maciejczak, Prof. SGGW, dr. hab. – WULS – SGGW, Poland  
Dariusz Milewski, Prof. US, dr. hab. - University of Szczecin, Poland  
Tomasz Nowakowski, Prof. dr. hab. - Wrocław University of Science and Technology, Poland  
Dariusz Pyza, Prof. dr. hab. – Warsaw University of Technology, Poland  
Krzysztof Rutkowski, Prof. SGH, dr. hab. - SGH Warsaw School of Economics, Poland  
Beata Sadowska, Prof. US, dr. hab. - University of Szczecin, Poland  
Anna Saniuk, Prof. UZ, dr. hab. - University of Zielona Góra, Poland  
Sebastian Saniuk, Prof. UZ, dr. hab. - University of Zielona Góra, Poland  
Beata Ślusarczyk, prof. PCz, dr. hab. - Politechnika Częstochowska, Poland  
Josu Takala, Professor, University of Vaasa, Finland  
Grzegorz Koszela, PhD – WULS – SGGW, Poland  
Konrad Michalski, PhD – WULS – SGGW, Poland  
Beata Milewska, PhD - WSB University, Poland  
Luiza Ochnio, PhD – Warsaw University of Life Sciences – SGGW, Poland  
Pornsiri Suebpongsang, PhD - Chiangmai University, Thailand  
Karol Wajszczuk, PhD - Poznań University of Life Sciences, Poland  
Magdalena Wójcik-Jurkiewicz, PhD - Cracow University of Economics, Poland

## **Organizing Comitee**

Tomasz Rokicki Prof. SGGW dr. hab. – Chairman  
Paulina Ziółkowska, MSc - secretary  
Elżbieta Szymańska, Prof. SGGW, dr. hab.  
Agnieszka Maciąg, PhD  
Aleksandra Perkowska, MSc

## Registration variants

---

### Variant 1

0 EUR – on-line participation, presentation, without conference paper

---

### Variant 2

free on-line participation in the conference with the speech, publication of an article in the “Sustainability” journal (IF 2.576) in a special issue „Economic and Social Consequences of the COVID-19 Pandemic” ([link](#)) - cost 1900 CHF (discount for conference participants provided that the [abstract](#) is sent in the form by 03/06/2021), payment to the journal's account after approval of the publication.

---

### Variant 3

free on-line participation in the conference with the speech, publication of an article in the “Energies” journal (IF 2.702) in a special issue „Economic and Social Consequences of the COVID-19 Pandemic in Energy Sector” ([link](#)) cost 2000 CHF (discount for conference participants provided that the [abstract](#) is sent in the form by 03/06/2021), payment on the journal's account after approval of the publication.

---

### Variant 4

150 EUR– on-line participation, presentation, the conference paper published as the monography chapter

---

### Variant 5

0 EUR – on-line listener (neither publication nor presentation)

---

### Variant 6

150 EUR - on-line listener with the conference paper published as the monography chapter

---

In the case of a chapter in the monography, after filing the registration form, the conference fee should be transferred to:

Warsaw University of Life Sciences - SGGW  
166 Nowoursynowska Street, 02-787 Warsaw  
account number: 44 1240 6003 1111 0000 4945 5130  
SWIFT: PKOPPLPW, title of payment: surname and  
last name, conference no. 507-20-910800-T000058-99

Department of Logistics, Institute of Economics and Finances  
Warsaw University of Life Sciences - SGGW  
Nowoursynowska 166, 02-787 Warsaw, Poland, bldg. no 3  
phone. (048 22) 593 42 55  
e-mail: [kl@sggw.edu.pl](mailto:kl@sggw.edu.pl)

# Deadlines

Registration and participation fee transfer – **04.06.2021**

Submitting monography chapter – **30.06.2021**

Submitting paper for Sustainability Special Issue (directly via journal website) – **30.11.2021**

Submitting paper for Energies Special Issue (directly via journal website) – **31.01.2022**

[Registration form](#)



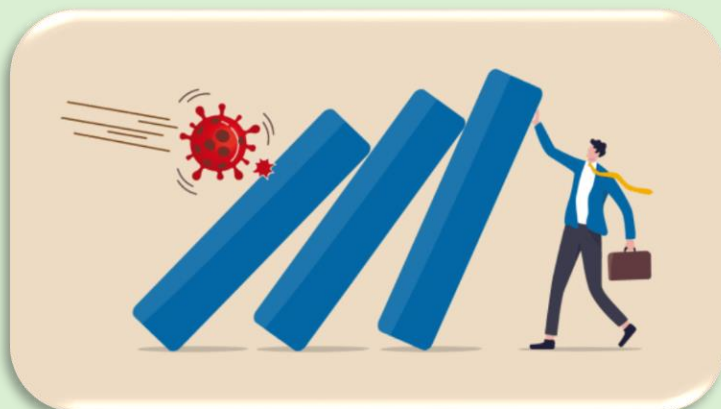
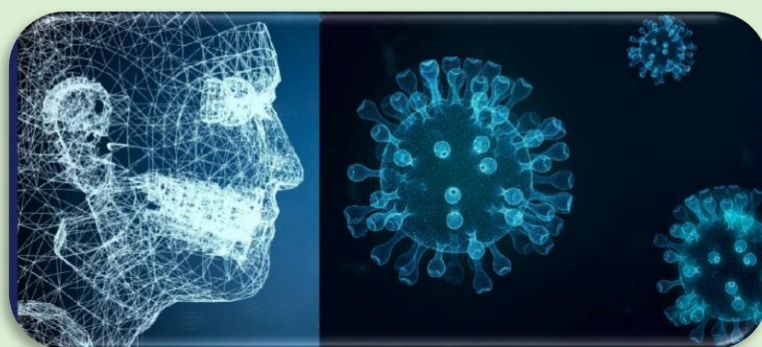
## Contact

Paulina Ziółkowska, MSc

paulina\_ziolkowska@sggw.edu.pl  
tel. 048 604 563 996

Tomasz Rokicki, Prof. SGGW, dr. hab.

tomasz\_rokicki@sggw.edu.pl  
tel. 048 22 59 34 259





## For Authors of monography chapter

Papers with a length of 10 to 12 pages should be sent in the electronic form to the following e-mail address: **paulina\_ziolkowska@sggw.edu.pl** in .doc or .docx format.

Publications should be prepared in Polish or English.

Editorial requirements:

All Authors are required to submit the publication in a standardized format, which will facilitate our further formatting. The file should fulfil the following requirements:

- font: Times New Roman, size 12pts,
- interline 1.5
- mirror margin of 2.5 cm
- pages numbered
- please don't use italics, bold, caps if it's not really needed
- the article must be prepared for grayscale printing
- all graphs and drawings must be legible (also in grayscale)
- in tables, fonts can be lower than 12 points and single spacing. All cell edges must be visible in basic style and without ornaments
- chapters and subsections must be numbered, however, do not format / highlight them.

In order to prevent cases of ghostwriting and guest authorship, the authors are asked to send a statement to the editor about the participation in the creation of the article. Ghostwriting and guest authorship are manifestations of scientific misconduct. All such events that are detected will be documented and made public.